
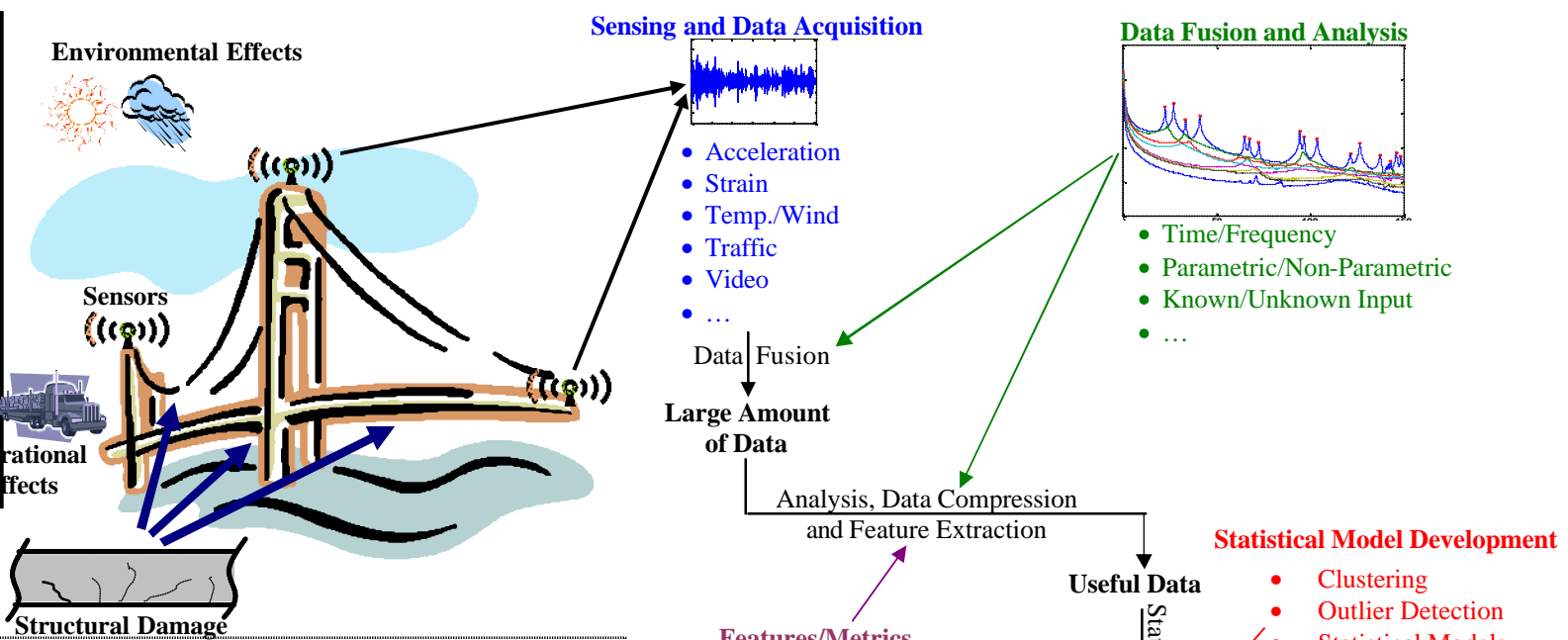


INFORMATION EXTRACTION USING STATISTICAL PATTERN RECOGNITION FOR STRUCTURAL HEALTH MONITORING



**University of
Central
Florida**

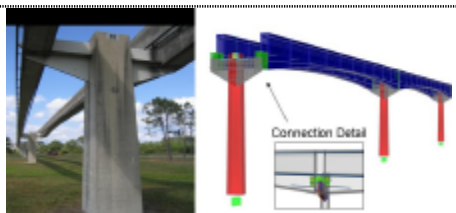
Dr. F. Necati Catbas
 University of Central Florida
 Civil and Env. Eng. Dept.
 Tel:407-823-3743
 Fax:407-823-3315
catbas@mail.ucf.edu
<http://people.cecs.ucf.edu/catbas>



Examples of Real Life Applications from the Previous Research Studies (Major Bridges, Theme Park Structures, Aerospace Structures)



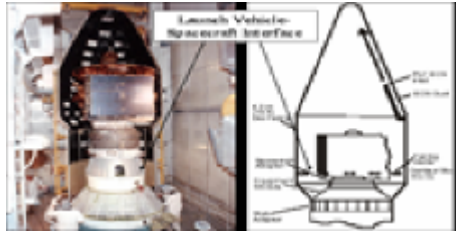
a) Comprehensive Structural Health Monitoring of Commodore Barry Bridge



b) Modeling & Reliability Analysis of Monorail Beamways at Theme Parks



c) Monitoring and Evaluating of Brooklyn Bridge Towers and Deck



d) Analyzing and Evaluating Coupled Systems for Safe Load Transfer

- Features/Metrics**
 w, V
- Frequency
 - Mode Shapes
 - Flexibility
 - Transmissibility
 - AR, ARX coefficients
 - ...